

Memory Lane

EXPLORE THE PAST OF DOWNTOWN HAMILTON

VIEW MORE
PROPERTIES
HERE

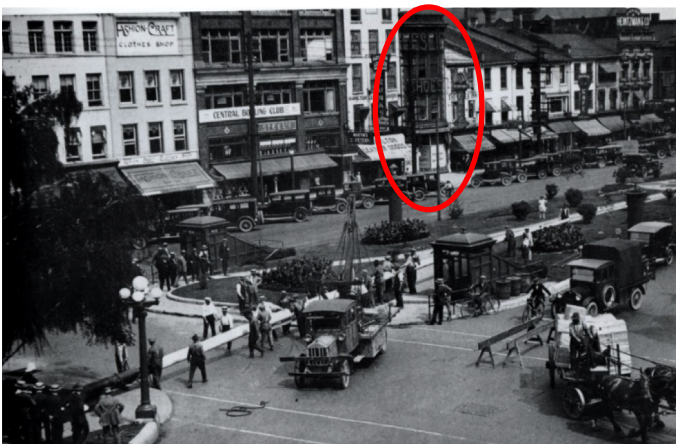
65 King St. East (Sugar Marmalade)

65 King Street East was constructed in the mid-19th century as a three-storey commercial building with a three-bay front façade. 65 King Street East housed a series of hardware merchants including Edward McGiven & Company (1850-1861), J.B. Hellowell (1862), William McGiven (1863-1866), William Ross & F. Smith (1867-1868), William Bowman & J. Moore (1870-1895), Peter Bertram (1896-1899), F. Hamilton (1900-1907) and Alexander Hardware Company (1908-1914). In the early-to-mid-20th century, 65 King Street East housed a series of shoe stores including Leslie Shoe Store (1915-1936), Gibbins Shoe Store (1937-1938) and Arliss Shoe Store (1939-1947).

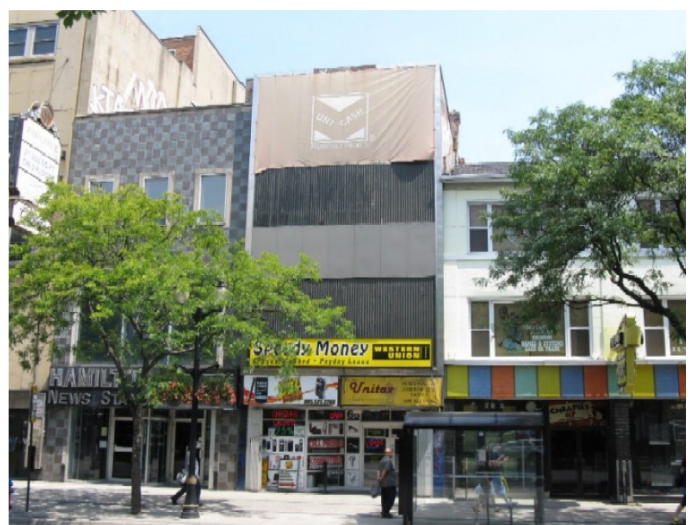
The building was occupied by Reitman's store from 1948 to 1979 and by the 1950s the upper storeys of the front façade were blinded by metal cladding with "Reitman's" across the centre.



In this photo of a Commonwealth Games road July 1978 Reitman's can be seen in the background along with Singer Sewing Center and Arliss Shoes.



This image shows the stretch of King St. East between Hughson and John Streets in the early 1900s. Leslie Shoes, highlighted, can be seen in the middle of the row of businesses. Photograph found in Gary Evan's book The Prints of King.



The building prior to becoming most recently Sugar Marmalade. In 2012 the space housed a combination of Speedy Money, Jazz Wireless and Unitax Professionals.