

Memory Lane

EXPLORE THE PAST OF DOWNTOWN HAMILTON

VIEW MORE
PROPERTIES
HERE

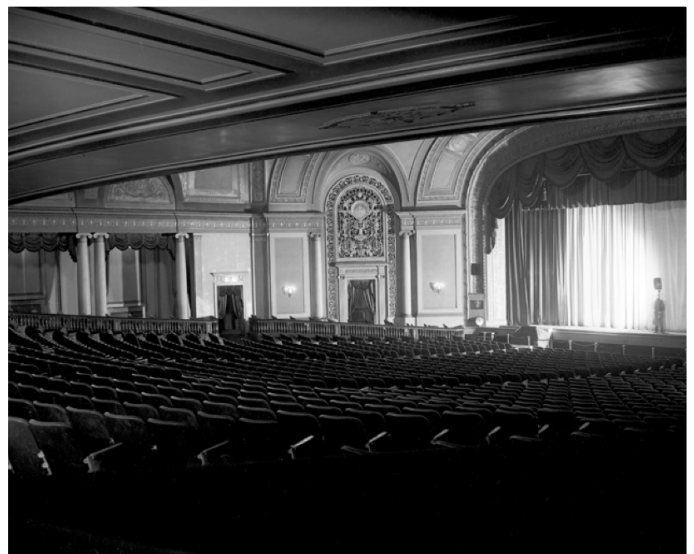
Palace Theatre

137 King Street East is a two-storey commercial building constructed in 1977 on the site of the former Palace Theatre. The former two-storey rectangular building, which had a short façade fronting onto King Street East, acted as the entrance to the Palace Theatre, which was a one-storey building extending three storeys in height that was located to the north. The Palace Theatre originally opened as the Pantages Theatre in 1921 on the site of the Old Revere Hotel, a three-and-a-half storey brick building.

Pantages, the city's first million dollar theatre, was built as a combination movie and live theatre venue designed by noted architect Thomas Lamb, who was also responsible for New York's Radio City Music Hall. The building was modified and renamed the Palace in 1930 after being taken over by the Canadian Famous Players Corporation. The Palace had a marquee extending out over the sidewalk on King Street East and a large neon sign surpassing the height of the building. The first 3-D film in Hamilton was shown here in 1953. The theatre had 2007 seats. The Palace Theatre building was demolished in 1972.



Palace Theatre pictured in the 1940s.



The lower seating level facing the stage in the Palace Theatre.

continued...

Palace Theatre ...continued



The lower seating level facing the back of the theatre. Balcony seating is on the upper level.



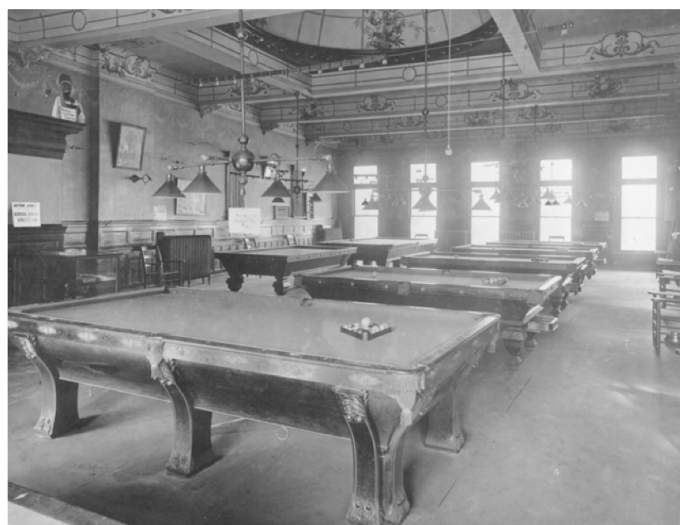
The rear doors to the Palace Theatre facing King William Street.



An advertisement in the lobby. The Palace Theatre was located at 137 King Street East. The theatre was opened in 1920 as a combination vaudeville and motion picture theatre called the Pantages. In 1930 it was renamed the Palace.



Looking towards the King St. entrance to the theatre.



The Marathon Billiard Parlor was located at 139 1/2 King Street East on the same block as the Palace Theatre. It was located on the second floor of the building. The business first appears in the Hamilton city directory in 1930 and last appears in 1933.