

Memory Lane

EXPLORE THE PAST OF DOWNTOWN HAMILTON

VIEW MORE
PROPERTIES
HERE

The Terminal Building (Effort Square)

The Terminal Building, designed by Charles Mills, stood at the corner of King Street East and Catherine Street. The building was opened November 1907. From the 1860's onward the building was home to Wanzer Lamps and Wanzer Sewing Machine. Richard Mott Wanzer established this sewing machine factory, the first in Canada. The Wanzer lamp was made by the same company and was patented in 1886. They were produced until 1900. By 1885 the building was shared with the Hamilton Electric Light company.

This factory was demolished to build the Hamilton Terminal building. This housed the terminal station and general offices for the Dominion Power and Transmission Company, Limited. The offices of the Cataract Company and Hamilton Electric Light and Power Company were also located in this building. The building was demolished by March 1958.



The Terminal Building in 1935.



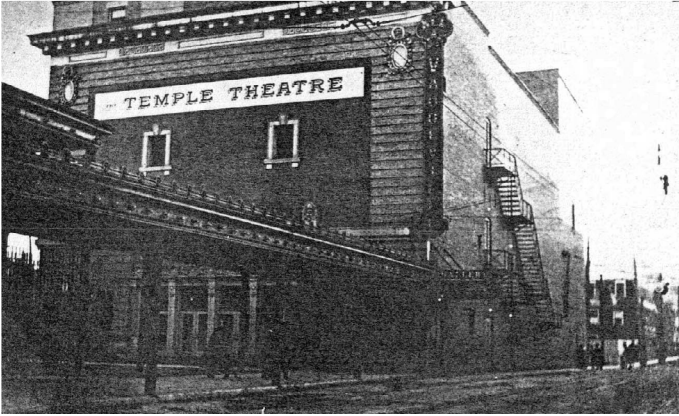
Terminal Building 1956. The Fire Department erects a sign on the building for their Muscular Dystrophy Campaign.



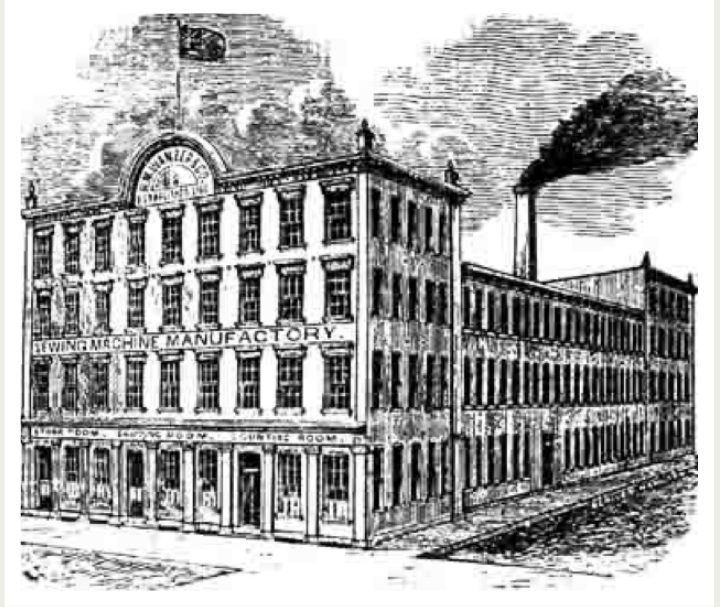
J. A. Johnson's drawing of the proposed Terminal Building, designed by Charles Mills, to be built at the corner of King Street East and Catherine Street. The barn-like structure on the left was not built. The building was opened November 1907.

continued...

The Terminal Building ...continued



Bennett's Vaudeville Theatre was located directly behind the Terminal building on Catherine St. It was renamed the Temple Theatre in 1911. The building was dismantled as a theatre in the 1920s and became the site of Wentworth Motors which lasted until the late 1950s. This building and the Terminal building were demolished in 1959, six years after Wentworth Motors Company Limited bought the Terminal Building.



105 Main Street East serves as an office tower and 115 Main Street East serves as an apartment tower, known as Kensington Suites.



Terminal Towers were designed by architect Crang and Boake and constructed in 1965 by contractor Taylor Woodrow of Canada Limited. The original tenants of the building included the Terminal Towers Leasing Office, the City of Hamilton Magistrates Court, Hamilton Motor Inn Company Limited, the Royal Trust Company and the Holiday Inn hotel. By the mid-1990s the complex was renamed Effort Square after being purchased by Effort Trust, and the Holiday Inn was replaced by the Ramada Plaza Hotel, which became the Crowne Plaza circa 2007.